



## How to Book

Email your requested days to:

**admin@grommetsooshc.com.au**

you will receive an email confirming the booking

TXT your requested days to:

**0411 199 049**

you will receive a TXT confirming the booking

## How to Enrol

Email

**admin@grommetsooshc.com.au**

requesting enrolment forms

Drop into the service during operating hours to collect a hard copy enrolment form:

**BSC: 7am - 8.30am**

**ASC: 2.30pm - 6pm**

**VAC: 7:30am - 6pm**

## Nut Aware

During the holidays, children attend who have **severe** allergies to nuts.

**Please do not pack any foods that contain nut products**

example: Nut Bars, Peanut Butter Sandwich

## Fees

Fees are reduced with the application of the Child Care Subsidy (CCS)

### EXAMPLE

Daily Fee - **\$95.00**

**85% Child Care Subsidy is applied to Daily Fee of \$95.00 = \$18.29 out of pocket child care cost.**

The extra cost of the **activities** are included to the daily fee.

Your Child Care Subsidy is then applied to the full amount.

You will only have to pay the 'Gap Fee'.

If you need help working out the cost, please contact admin via email.

## COVID19

Parents and carers are reminded that children cannot attend the service if they are showing any symptoms of COVID-19.

Families affected by self-isolation requirements or positive results can contact admin to discuss impacts to billing.

## Remember to Pack

- ✓ Morning Tea
- ✓ Lunch
- ✓ Afternoon Tea
- ✓ Hat
- ✓ Water Bottle
- ✓ Suitable Shoes
- ✓ Weather Appropriate Clothing

## Centre Information

Operating Hours:

**7.30am - 6pm**

**Monday - Friday**

Closed Public Holidays

Location:

**St Ambrose Primary School,  
1 Charles Street, Pottsville 2486**

Contact Details:

**Service 0477 670 320**

**Office 0411 199 049**

**Email**

**admin@grommetsooshc.com.au**

**LITTLE GROMMETS OOSHHC**

# St Ambrose Catholic Primary School

1 Charles Street, Pottsville NSW 2486

Service - 0477 670 320 | Office - 0411 199 049

Email - admin@grommetsooshc.com.au

**NO WALK-INS!**



**BOOKINGS ESSENTIAL**

Friday 01.07.22

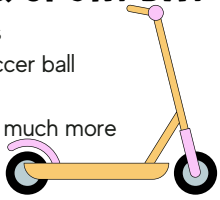


**Last Day of School Term 2**

Monday 04.07.22

## WHEELS & SPORT DAY

- Crazy relays
- Blow up soccer ball
- Dodge ball
- Volleyball & much more



Create your own license, make safety signs, have fun riding around with friends.

Don't forget your helmet!

Daily Fee \$65.00

Tuesday 05.07.22

## Pottsville Tennis Court

EXCURSION - walk

We are off to the Pottsville Tennis Courts for some tennis & games. Exploring what the town has to offer!



Daily Fee \$70.00

Wednesday 06.07.22

Old Macdonald's Travelling Farms are coming to Little Grommets & bringing a variety of baby farm animals which can include lambs, kids, piglets, calf, guinea pigs, ducklings, baby chicks and don't forget the Alpacas!



Daily Fee \$85.00

Thursday 07.07.22

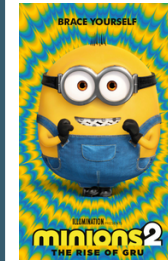
## Movies, Spa, PJ & Smoothie Day

Requested by the kids!

Come dressed in your chill our clothes, relax at the mini spa, enjoy a movie, popcorn & a smoothie!

Daily Fee \$65.00

Friday 08.07.22



**HOYTS**

Excursion to HOYTS Tweed City to watch 'The Rise Of Gru'.

Enjoy with a small popcorn & drink.

EXCURSION - bus

Daily Fee \$90.00

Monday 11.07.22

## Mad Hatters Tea Party

- Design your own mad hatter's hat
- Afternoon tea party
- Dress up as your favourite Disney character

Daily Fee \$70.00

Tuesday 12.07.22

## Pottsville Lawn Bowls

EXCURSION - bus

Tuesday is for trying new things!

We are off to Pottsville Sports to learn & try out lawn bowls with the help from the lawn bowls members.



Daily Fee \$75.00

Wednesday 13.07.22



## TROPICAL FRUIT WORLD

EXCURSION - bus

Spend the day at Tropical Fruit World, a guided tour of the orchards by tractor train. Visit & feed the animals, plus enjoy the boat cruise through the bushland valley in the heart of the farm.

Daily Fee \$100

Thursday 14.07.22



Come dressed up in your brightest colours, dance, play games. The smoke machine, party lights & music will be pumping. Prizes to be won!

Daily Fee \$80.00

Friday 15.07.22

## Ambrose Brown Park & Beach Walk

We are getting out for the day. A short walk to Ambrose Brown Park for some games, a play, then a beach walk for some sandcastle building.

EXCURSION - walk

Daily Fee \$65.00



Monday 18.07.22

## MAKE YOUR OWN PIZZA!

Enjoy making your own pizza for lunch, a range of topping selections. YUM!

Daily Fee \$70.00

Tuesday 19.07.22

## First Day back to School for Term 3



## PLEASE REMEMBER TO PACK DAILY

- Morning Tea
- Lunch
- Afternoon Tea
- A Hat
- A Drink Bottle
- Suitable Shoes (for the activity)
- Weather Appropriate Clothing

We're ready to accept your vouchers



BEFORE AND AFTER SCHOOL CARE VOUCHERS



For more information, go to [www.service.nsw.gov.au](http://www.service.nsw.gov.au) or call 13 77 88

